



LUCA C SOLAR STREETLIGHT

30-120 watt LED area luminaire
IK06 | IP65 | Pole Mount

Application

A solution for sport fields, commercial, industrial, retail, education, hospitality, and highmast lighting.

Features

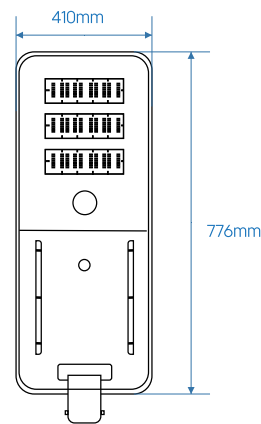
- Operating Temperature: -30°C to $+55^{\circ}\text{C}$
- Monocrystalline Solar Panel
- Solar Charge Controller: MPPT
- Battery: Lithium LifePO4
- 6 Hours Charging time (Full Sunshine) +-20 Hours (Rainy Weather)
- 4Hrs & 100% Discharge Time (8 Hours @ 30%)
- Human body induction + light control + time control
- LED Type: SMD3030 Chipset
- Wind Resistance: Grade 10
- Color Rendering Index: Ra70/Ra80
- CCT: 2700K - 6500K
- Beam Angle: T2, T3, T4

Design Specifications

- Housing Body: ADC12 Die-Cast Aluminium.
- Paint treatment: Anti-corrosion
- Diffuser: Polycarbonate PC
- Housing Colour: Gray or Black
- Mounting: Pole mounting.
- Pole Diameter: 60-80mm



Dimensions

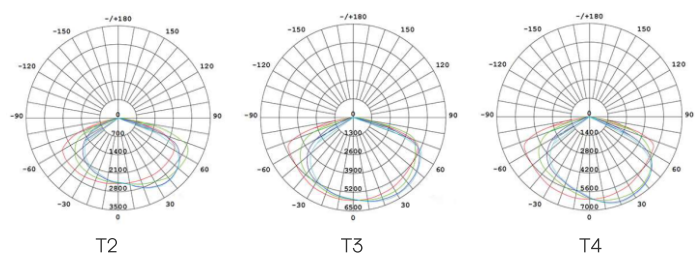


30W

Performance



Photometric Data



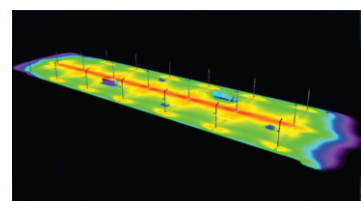
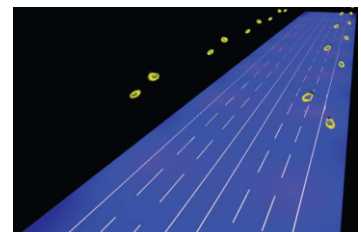
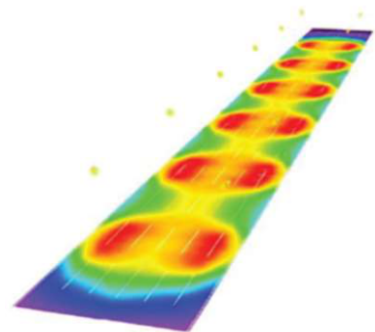
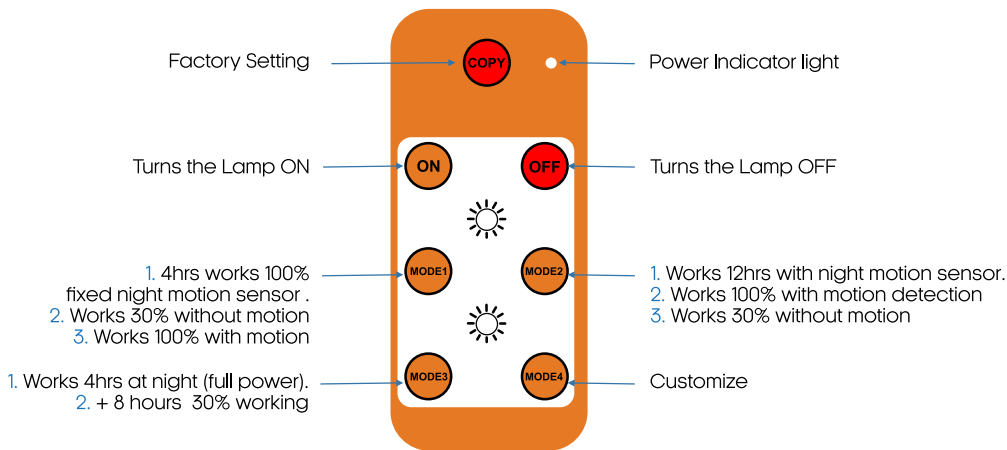
LUCA C SOLAR STREETLIGHT

30-120 watt LED area luminaire
IK06 | IP65 | Pole Mount

Technical Specifications

Model No.	Size (mm)	Power	Lumen lm/W	Modules	Battery (v)	Solar Panel	Luminous Flux	Installation Height (m)	LED
LUC00105	776*410*135	30W	200	2 Module	3.2V/72AH	18V/50W	6000lm	5-7m	100pcs
LUC00106	893*410*135	40W	200	3 Module	3.2V/100AH	18V/60W	8000lm	6-8m	150pcs
LUC00107	1121*410*135	60W	200	4 Module	12.8V/30AH	18V/80W	12000lm	8-10m	200pcs
LUC00108	1395*410*135	80W	200	5 Module	12.8V/45AH	18V/105W	16000lm	10-12m	250pcs
LUC00109	1606*410*135	100W	200	6 Module	12.8V/60AH	18V/130W	20000lm	12-15m	300pcs
LUC00110	2011*410*135	120W	200	7 Module	12.8V/75AH	18V/150W	24000lm	14-16m	350pcs

Working Modes



LUCA C SOLAR STREETLIGHT



Certifications



Unit 21 & 22, Brentwood Business Park,
Brentwood Park AH, Benoni.
info@lambdalumen.com
Tel: +27 10 500 9150